

Comeback of a Legend

How to save the dinosaurs of the turntable era from extinction.

By Rainer Horstmann

The name MICRO SEIKI raises eyebrows in so many analog friends. Experts usually think immediately of the "RX-1500" or the "RX-5000" or even the "SX-8000". These were the flagships of what was once the largest turntable manufacturer in the world.

Double drive from Sascha Z. from the AAA Forum





*Dirk Bruin from
the Netherlands*



The first newly made turntable



The first new after-built plate warehouse

– Yes, MICRO SEIKI was at the time the largest manufacturer of turntables. But not only under the brand MICRO SEIKI, because many other well-sounding player names came from the same Japanese house, as for example: LUXMAN - SANYO - DENON - SHARP - TOSHIBA - SANSUI - KENWOOD - TELEFUNKEN - SABA - MARANTZ PIONEER - just to name a few brands. They were all made by MICRO SEIKI and then got their respective name badge.

The brightly glowing star MICRO SEIKI unfortunately went down. Only a few insiders and former employees continue today under the name TECH-DAS. They build top-class drives - but also at top prices.

Anyone who owns a SX-8000 or an RX-5000 today can be lucky. The slogan: MICRO SEIKI are eternal drives, is not exaggerated. And yet, these legendary drives are a rarity today and are still in great demand.

The RX-5000 z. B. is a classic, as he could not be more beautiful. Many competitors have followed this simple, beautiful design and more or less imitated it - and still do today. But the original remains an original - right? If there were not in the Netherlands, in the small town of Ter Apel, a MICRO SEIKI lover who really has MICRO SEIKI molecules in his veins. This "Crazy Man" is Dirk, Dirk Bruin.

Dirk thought a few years ago: "Could this RX-5000 be made the same today as it was in the 80's? You just have to do it exactly and use the same material ... and of course find a company that has the machines.

If Dirk Bruin puts something in his head, which is reasonably manageable and feasible, then he pulls it through - then even his wife Ingrid cannot stop him.

Therefore, he meticulously built the first Micro Seiki RX-5000 "Clone" with the help of his suppliers. The precision and perfection are in no way inferior to the original. On the contrary, the technical production possibilities are better today than they were 40 years ago.

But since the name MICRO SEIKI is protected to this day, he unfortunately could not call this perfect drive MICRO SEIKI. However, he wanted to pay tribute to Micro Seiki ... "Why don't I just call the beautiful part tribute?" he thought, and then the name was born.

Dirk made it down to the smallest detail with exactly the same material and the same texture, this Micro Seiki RX-5000 uh ... I mean to make the "Tribute" perfectly.

However, that was only the first step



First test of a prototype "RX-5000" tribute

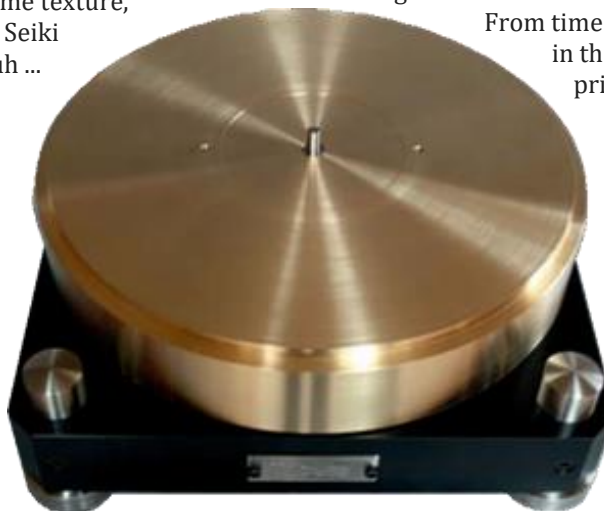


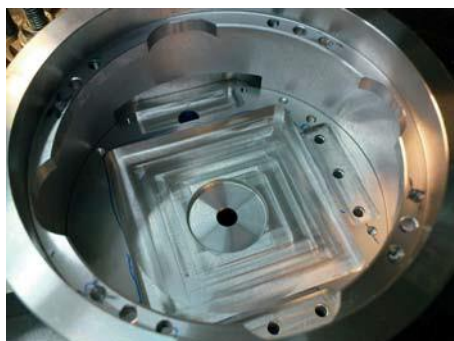
Finished chassis after the original paint job

A drive needs a drive, a "motor stand", as it was called at MICRO SEIKI. Such Original drives are very difficult to find.

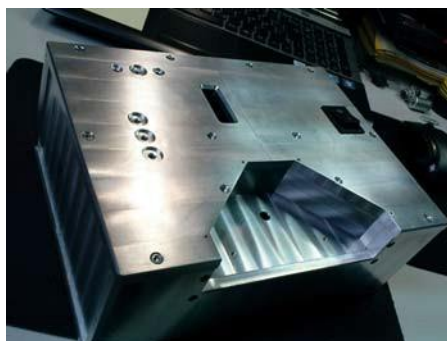
From time to time, some appear in the Internet, but they are pricey. Up to \$ 5,000, - are called for it.

Sure, there are universal drives from some manufacturers that are quite able to power this new legend, but the





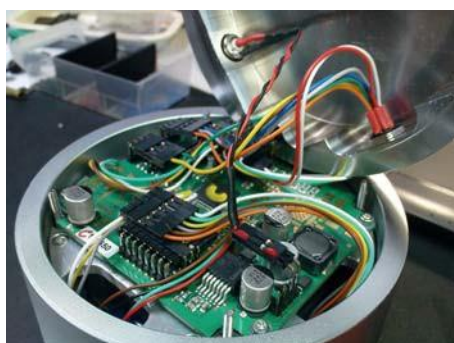
Housing Milling of the DAE-01 SP



Adaptation/fine-tuning of the prototype



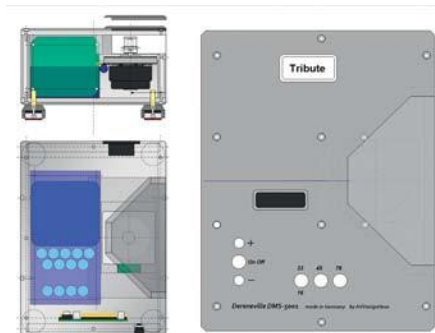
Installation of electronics in the prototype



Assembling of a DAE-01 CL



Finished DAE-01 CL at a 24-hour test run.



First drafts and sketches of the new drive.

optics, the overall picture is not the same anymore. It is and remains a compromise. Dirk Bruin was also aware of this, but he did not want to go for a new drive.

At about the same time, another "madman" was sitting in Lippstadt, almost immersed in the same thoughts, in his little room. Years earlier, he had developed a universal drive that had been causing quite a stir by then.

These state-of-the-art computer-programmable drives, called the DERENEVILLE, unite, modestly, the best components and controls currently available for a turntable drive of this kind. The ease of use is so extensive that it is not explained in a few sentences.

"It must be possible to put this coveted high-tech drive in a new housing that comes very close to the MICRO SEIKI RX-5500," I kept thinking.

I wanted to create a new, modern drive that could easily replace the old RX-5500. For I knew the older original drives were starting to lose their function and several owners of a MICRO SEIKI »RX-5000« or a »RX-1500« were looking for a replacement. Maybe there could be a small but concrete market in the near future.

Said, done - made first designs, built a first prototype, extensively tested, made extensions and retested until everything was perfect. I was glad to draw on the wealth of experience gained in developing the other drives in my drive designs.

Well, and then came the day when Dirk Bruin and the "madman" from Lippstadt got to know each other.

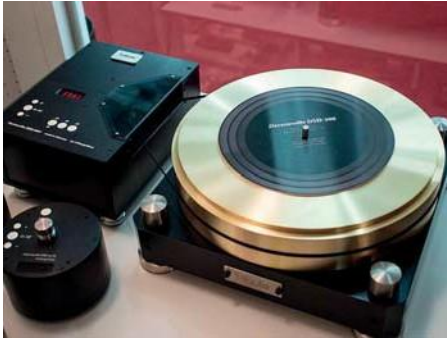
First, they make their way through email to hear what the other person thinks or how he is ticking. The chemistry has to be right otherwise you will not be able to cooperate well in the long term. Only if you fully and completely trust each other, the success is sure.

It built a healthy trust and soon the day came when the two met in person. Dirk made a little trip to Lippstadt with his wife.

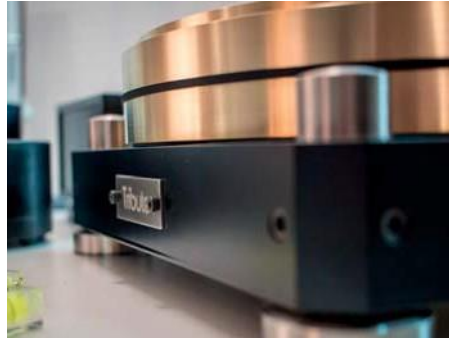
His enthusiasm was clearly felt - and so a friendship developed between two analog fools who firmly believe in their goals.

A little later then the return visit to Ter Apel in the Netherlands. Here, the foundation, which had been laid in Lippstadt, was strengthened and the cooperation with delicious Dutch cakes was sealed.

At the High End 2018 in Munich, the new drive and the new motor unit were presented to the public for the first time and met with unusually keen interest, both among visitors and in the international press.



First public presentation at the High End 2018



Retro can be beautiful

But there was still a big mountain of work ahead of them. After all, everything had to have a hand and a foot. In addition, the financial input for such an extensive project should not be underestimated.

From the first prototype now a series model had to be developed - the task was clearly in Lippstädter hands. A few weeks later, the CAD drawings and CAD data for the CNC milling machine were on the table. Now it could start.

Raw material was initially ordered for 15 units and then the chips flew. Parallel to this, a new, integrated power supply was specially developed. It should be an analog, linear power supply - no decried switching power supply. What the two should tackle should be on hand and free of any compromises.

Then it went to the controller. Again, this task was for the Lippstädter graduate engineer of Telecommunications J. Gremme, who had already developed the electronic control system and the software for the other DERENEVILLE drives a few years earlier, took over this part.

The casings were then sanded, brushed, and then anodized in black. Finally, the label was followed by a modern laser device.

Meanwhile, the tension in Holland rose more and more "What are the housings doing? Do you have some pictures for me? Can I help you with something? Can I already work on the website?"

When can we deliver the first ones? I already have some requests ... "

"Good things take a while" - an old saying of my father. "Only when everything has been thoroughly tested and all requirements met with flying colors, the part goes out of the house", with these words I told Dirk, my basic approach.

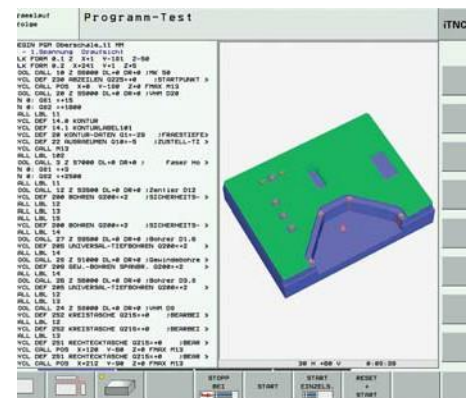
At the beginning of August 2018, it finally happened. All components were ready and now came the "wedding" - the assembly of power supply, control unit, motor and housing. A few minor changes and adjustments and then the first drive was on the test bench. All requirements, all expectations were fulfilled right from the start. There were no problems.

The first drives passed their endurance test with excellence. If I am completely honest, without wanting to play it up - after the intensive preparation we had expected nothing else.

A fancy packaging we had thought up a few weeks earlier. In a suitable, stable aluminum Flight case that is made for it, the new



Finished 3-D model in the calculator



Generation of the machine data



Lower part with pockets and free spaces



Finished lower part with lateral openings



Here the top, all clearly recognizable



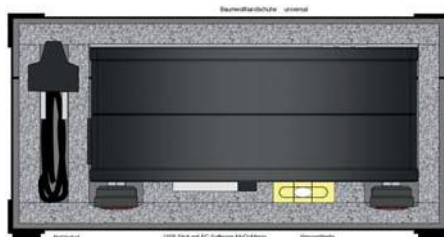
The first with laser labeled housing



The "brain" the control electronics



Stacking up in a different way - finished housing.



Design of a beautiful, stable and safe transport packaging



Access for computer and service



The new power supply PCB

Dereneville DMS-5001, the name of the new drives, is now delivered to customers around the world.

By now, of course, every reader should be clear who this "crazy" Lippstadt is. Anyone who knows me will not be too surprised. But shaking his head is still allowed.

It is my passion to develop and launch such new products - why?
That's easy: because it's fun.

In this sense ...



24 hours endurance test run of the first 5 Dereneville DMS-5001



24V DC is - 24VDC - perfect, it fits.



Greetings from Lippstadt!

More information on the websites:
www.db-tribute.nl or
www.dereneville.de



The first complete and clean packed engine unit - ready for shipping